



2.5" SATA TO USB External Enclosure

RX25-AT-SC-BLK/SLV

User Manual

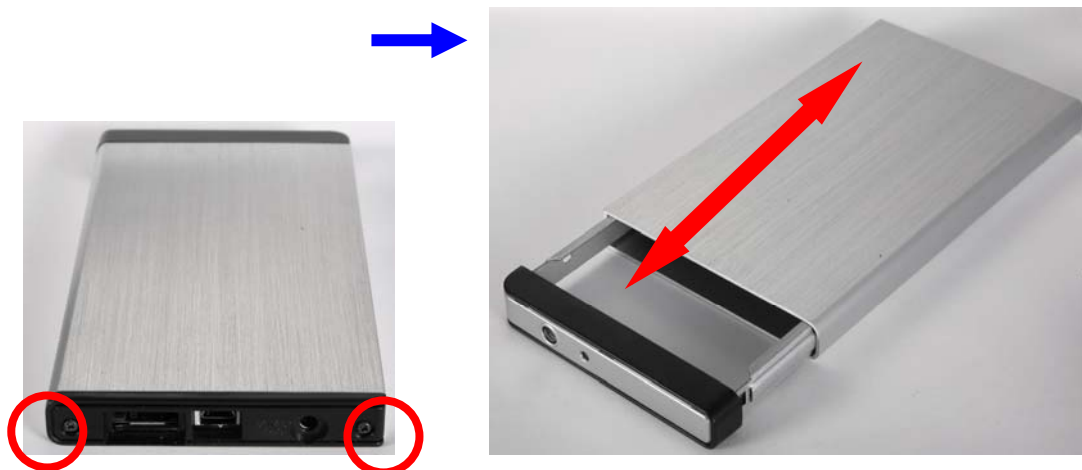


Hardware Installation Guide

☆ Please follow the instructions and make sure your hard drive is successfully installed to the external enclosure!

STEP1 :

Release the 2 screws then pull out the rear panel and tray.



STEP2 :

Place the HDD into the tray.
Push the HDD to connect the SATA connector.



Note: Make sure all connectors are connected well.

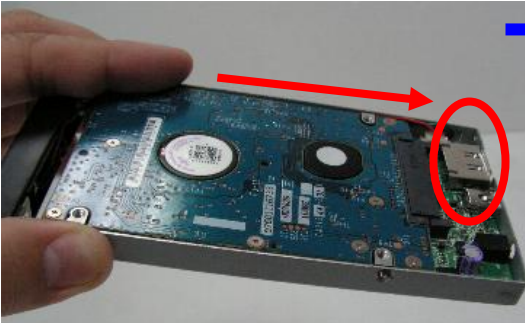
STEP3:

Screw the HDD on the tray tightly.

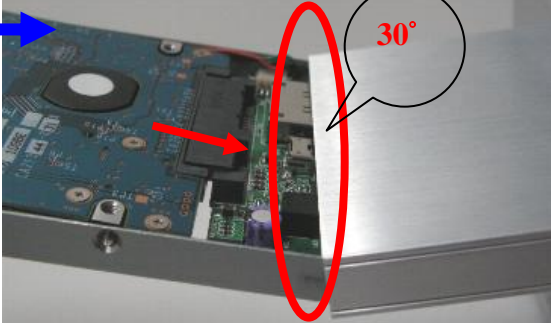


Note: Please slope tray 30° to the case, so it can be push-in smoothly without cause.

1.



2.



3.

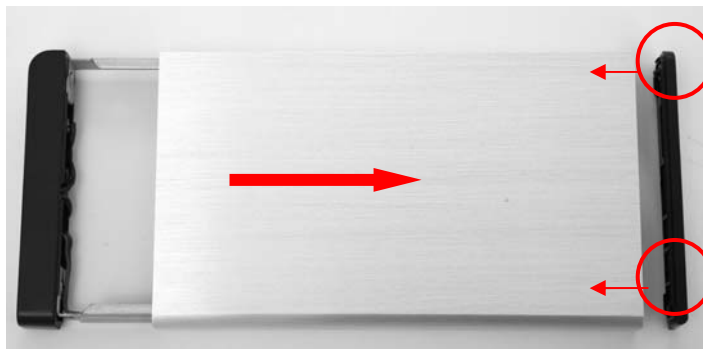


4.



STEP4:

Screw the rear panel and enclosure together.

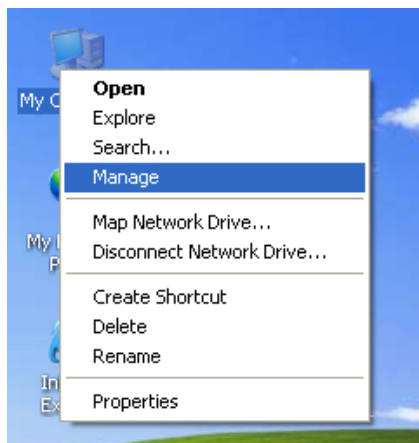


HDD Formatting Guide

- ☆ You may format your external HDD through USB connection.
- ☆ Please make sure your external HDD is turned on and well connected to the PC before formatting the HDD.

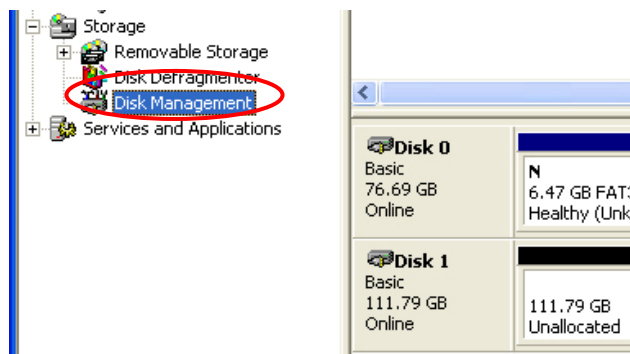
STEP1 :

Right -click “My Computer” icon and select the”Manage” column.



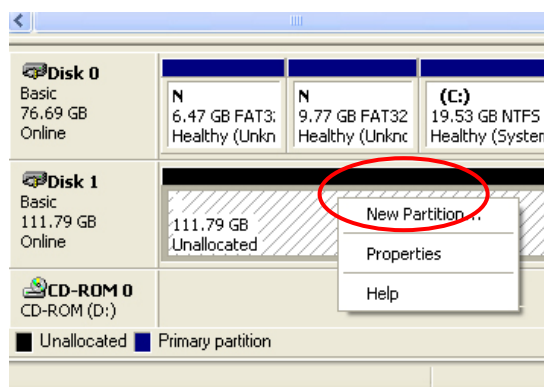
STEP2 :

Select “Disk Management” and you will see your External HDD showed “Unallocated”.



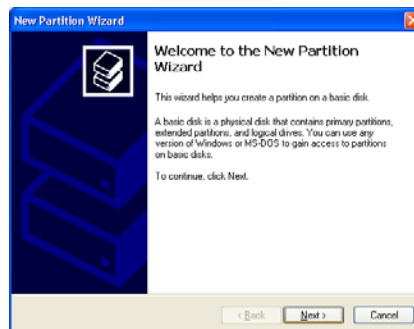
STEP3 :

Right-click on the “Unallocated” block and select “New Partition”.

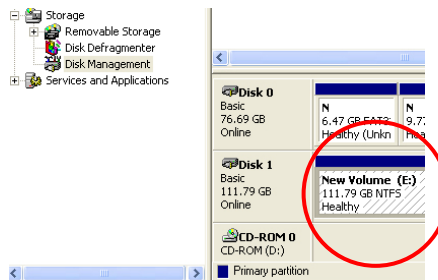


STEP4:

The “New Partition Wizard” will appear. Please follow the instruction of the wizard and complete the partition.

**STEP5:**

When new partition is completed, the external HDD will be recognized as a “New Volume”.

**STEP6 :**

Double-click “My Computer”. You will see the new volume appears on your PC.



Thank you for purchasing a quality Rosewill Product.

Please register your product at : www.rosewill.com for complete warranty information and future support for your product.